

I. Unscramble each with the help of picture.

1. Seeds ABESN

BEANS



2. Flower LUFOLACERWI

CAULIFLOWER



3. Stem GAACRUSEN

SUGARCANE



4. Leaves PISANHC

SPINACH



5. Root RAORCT

CARROT



II. Where you can see me?

1. Pineapple



Above the ground

Below the ground

Above the ground

2. Potato



Above the ground

Below the ground

Below the ground

3. Orange



Above the ground

Below the

Above the ground

4. Ginger

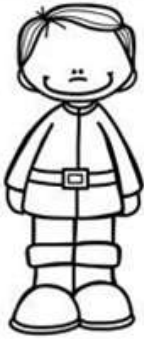


Above the ground

Below the ground

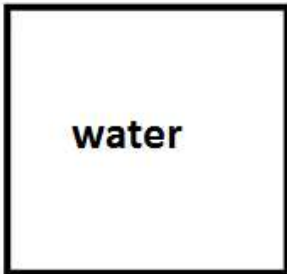
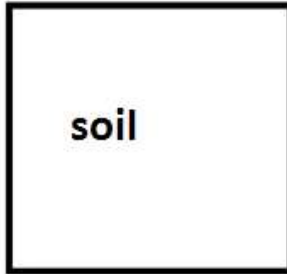
Below the ground

III.



Plant Needs

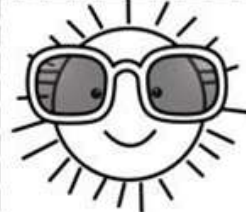
Help Jack decide what a plant needs.
Write the names of items which a plant needs to grow around the happy plant.



Write the names of items that plant doesn't need beside the unhappy plant.



toy



sun



Ice-cream



water

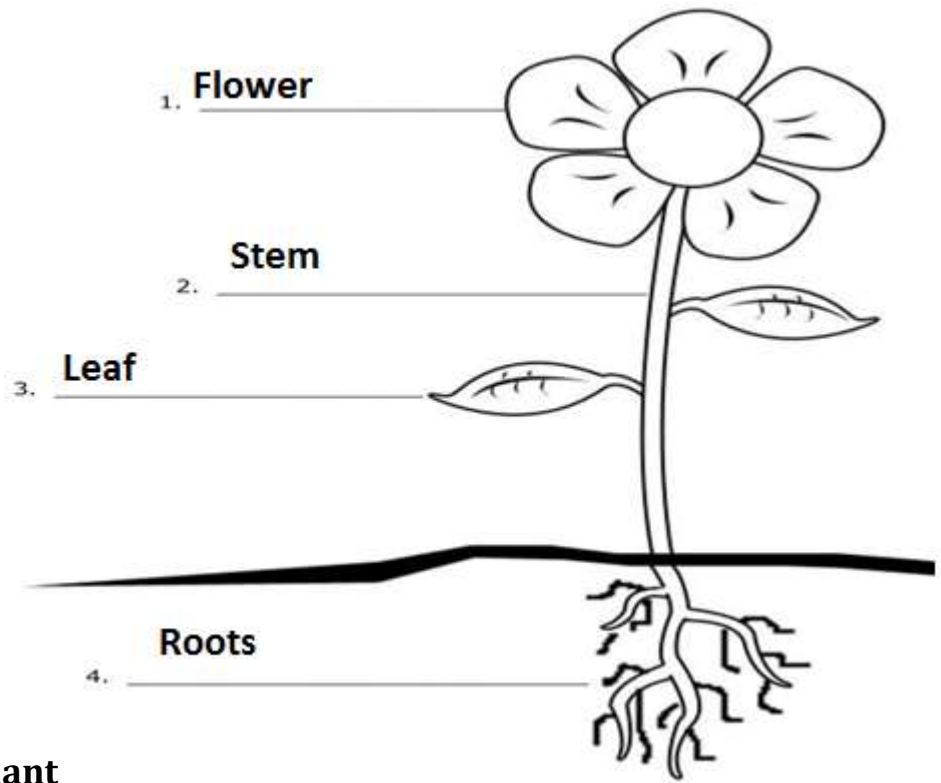


soil



air

IV. Name the parts of plant



V. Identify the type of the plant

Climber herb shrub tree creeper



Climber



creeper



herb



shrub



tree

VI. See the picture clues and solve the riddles.

I have a long stem.
I have yellow petals..
People eat my seeds.

I have thorns on my stem.
My petals can be many colors.
I smell very pretty.

What am I?

Sunflower

What am I?

Rose

I have flat leaves.
I drop acorns.
I am very tall.

I am green.
People step on me.
I get cut.

What am I?

Oak tree

What am I?

Grass



grass



oak tree



sunflower



rose